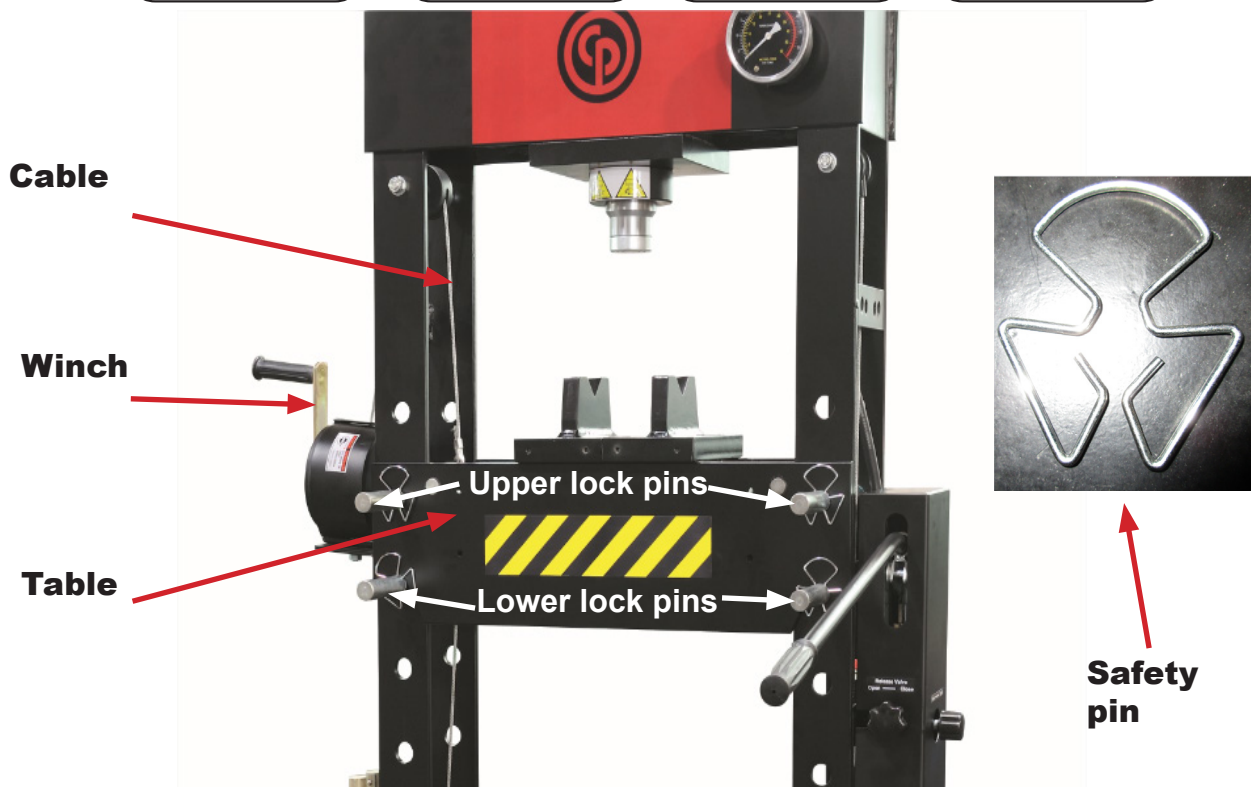
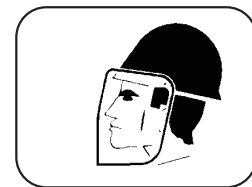
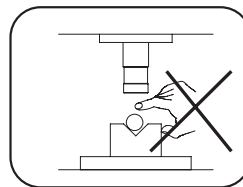
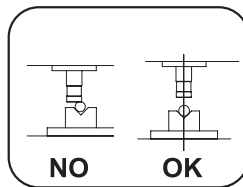
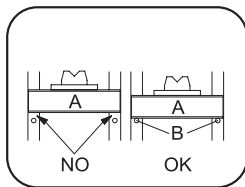


# SAFETY INSTRUCTIONS

## WARNING

- **Never exceed the rated capacity of the press.**
- **Keep unauthorised persons, particularly children, away from the work area.**
- **Do not introduce hands or any other part of the body in the work area.**
- **Always use ocular and facial protection.**
- **Never wear baggy clothes, ties, watches, rings, chains, etc. when using the press.**
- **Long hair should be tied up.**
- **Prior to use, make sure the press is securely anchored.**
- **Use appropriate guarding to contain any pieces that may break or fly apart when applying force.**
- **Use only press accessories having a capacity rating equal to or greater than the capacity of the press.**
- **Verify lift cables are slack before pressing on the bolster.**
- **Avoid off-center loads.**
- **The V-blocks must be used in pair, not by piece!**
- **Only one person at a time should operate the press.**
- **The operator must wear protective cloth, gloves, safety helmet, shoes and ear protector during operating.**
- **To avoid accidents, always be aware of any on-going work on the machine. Also, always stay focused on the job to be done.**



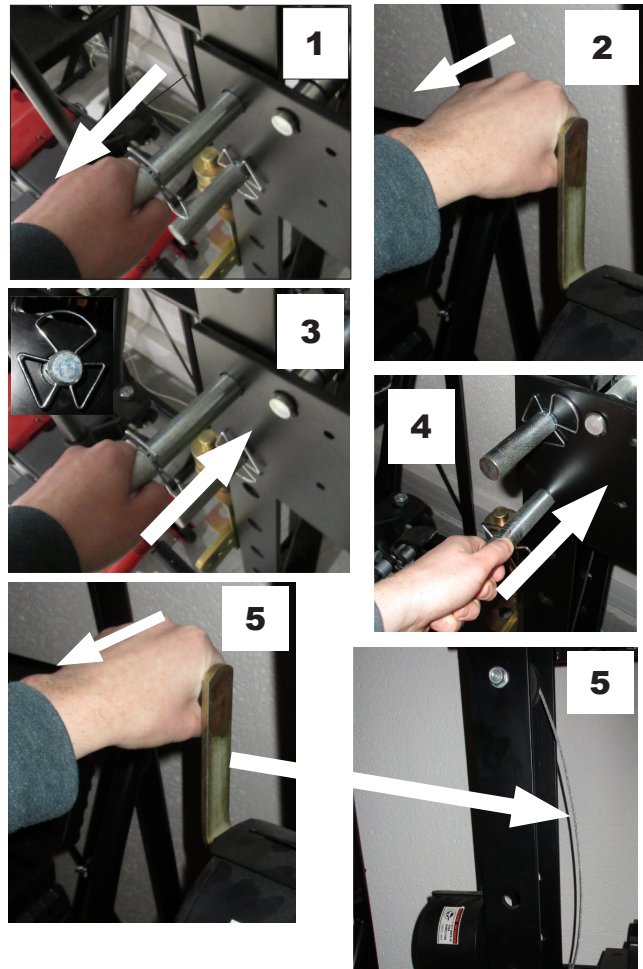
## INSTRUCTIONS FOR MOVING THE TABLE

**⚠ Caution** Never lower or lift the table with a load, the table must be free of load.

### Lifting the table

• **⚠ WARNING** While lifting the table, the 2 lower lock pins must remain in position.

1. Remove the upper lock pins.
2. Lift the table using the winch and adjust the height of the table to allow the positioning of the lock pins in the holes.
3. Insert the upper lock pins with the safety pins.
4. Remove and Insert the lower lock pins to a new position. Insert the safety pins.
5. **Always** operate the winch in order to release tension of the cables. **⚠ Caution** When using the press, **The cables must always be loose. The cables must not carry any load.**



### Lowering the table

1. Remove and insert the 2 lower lock pins to a new position.

**⚠ WARNING** While lowering the table, the 2 lower lock pins must remain in lock position.

2. Apply tension on the table using the winch and remove the upper lock pins.
3. Lower the table using the winch and adjust the height of the table to allow the positioning of the lock pins.
4. Insert the upper lock pins with the safety pins.
5. **Always** operate the winch in order to release tension of the cables. **⚠ Caution** When using the press, **The cables must always be loose. The cables must not carry any load.**

